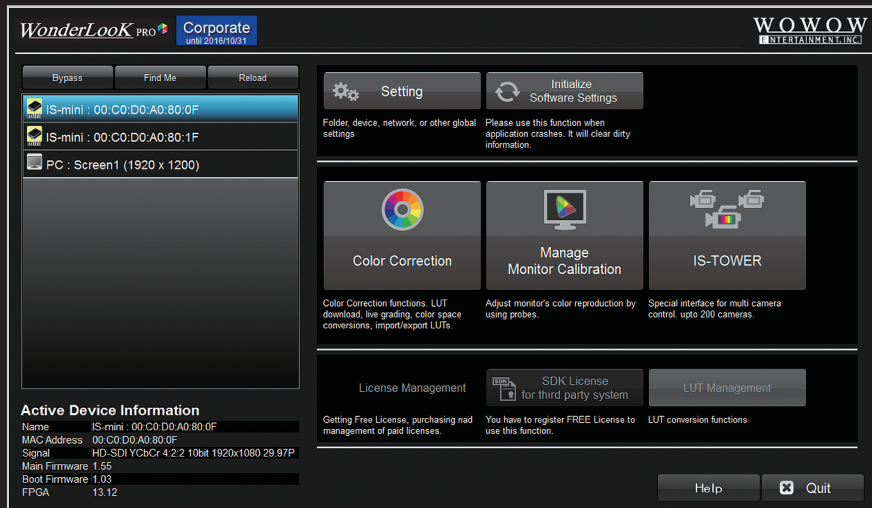


# WonderLook PRO

TO COLORISTS, CINEMATOGRAPHERS AND BROADCASTERS  
GET TOTAL CONTROL OF THE COLOR CREATION AND COLOR MANAGEMENT!



Based on Fujifilm's technology, "WonderLookPro" is a software designed to resolve any issue in color creation and color management. The "WonderLookPro" allows the operator to control LUTBOX devices, manage different camera profiles and LUTs, operate rendering variations such as film looks, implement various color correction methods, color space conversions, and control different color reproduction monitors.

## Main Features

### 1. Preset LUTs Available for Download

LUTs for more than 60 camera types are available for download via an internet connection, including a wide variety of rendering. These LUTs are made by precise measurement of each camera and combination of rendering technologies.

All	16 cameras
ARRI	3 cameras
Blackmagic	1 camera
Blackmagic	1 camera
Bypass.zip	1 camera
CANON	6 cameras
FOR-A	1 camera
GoPro HERO4	1 camera
JVC GYLS300CH	1 camera
PANASONIC	1 camera
RED	1 camera
SONY	30 cameras
VISION RESEARCH	1 camera
Various Signals	1 camera

Camera Variation

Target Display	Rendering	Look Variation	Gamma
Rec709	SRT V1.0	None	1.50
Rec2020	SRT V1.7.1	8592 REALA 5000	0.95
HDR 400nits	SRT Simple	8593 ETERNA 400	0.90
HDR 200nits	Ami Rec709 E800	8573 ETERNA 500	0.85
HDR 100nits	Canon BT709	8563 ETERNA 2500	0.80
DCI-P3	Fujifilm Print DI	8563 ETERNA 250	0.75
No Limitation	Fujifilm Print XD	8549 ETERNA Vivid 400	0.70
	Kodak Print Premier	8547 ETERNA Vivid 500	0.65
	Kodak Print	8543 ETERNA Vivid 160	0.60
	Panasonic V709	8522 F.64D	0.55
	Sony Cine+709	5229 U.S. 500ExT	0.50
	Sony LC_709	5219 U.S. 500T	
	Sony LC_709TypeA	5217 U.S. 200T	
	Sony Rec709 100p	5212 U.S. 100T	
	Sony Rec709 800p	5207 U.S. 250D	
		5201 U.S. 500D	

Rendering Variation

### 2. LUT Creation, Conversion, and Management

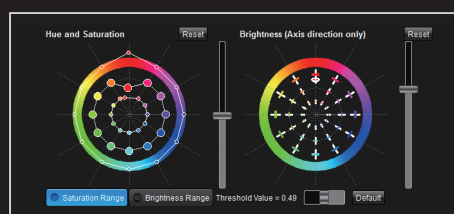
In addition to the preset LUTs, you can create colors from scratch and export them to a third-party imaging system. Or import LUTs from a different vendor to be used with our IS-Mini LUT Box. Imported LUTs can be converted to target other color spaces.

### 3. On-set viewing and on-set grading

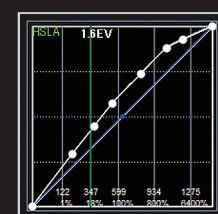
You can view and grade high quality image shot directly on set. The methods for real time color correction can be from ASC-CDL Parameters, 12-color Vector Color Correction, CCU Emulation, and Tone Curve Manipulation. When using multiple LUTBOXes, you can group them to control simultaneously, or set to be synchronize LOOK while other settings (IDT or target monitor) are different.



Lift/Gain/Gamma Correction



VectorColor Correction



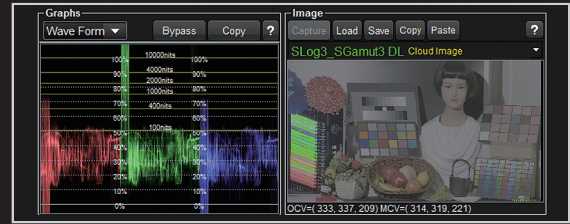
Tone Curve

## 4. Monitor Calibration

The “WonderLookPro” can detect and measure the color reproduction on monitors by using probes and create the compensation LUT to achieve a correct color reproduction in a very easy and simple way.

## 5. HDR Support

WonderLookPro supports HDR in various ways. It provides, HDR Rendering, HDR monitor settings, HDR to SDR mapping, SDR to HDR conversion, warning in HDR specs and HDR/SDR simultaneous color correction.



Still image function and brightness warning. Monitor was set to HDR\_ST2084, Wave Form shows 100nits to 1000nits, still images was labelled with over 400nits warning.

### ■ SPECIFICATIONS

LUTBOX	IS-mini, Teradek COLR, FSI BoxIO, FUJIFILM IS-100
Controller	Tangent Element Kb, Tk, Wave, Ripple
Probes	XRite i1pro, i1pro2, i1display OEM version Klein K-10A / Photo Research PR-655/PR-670 JETI Specbox1211/1201 (Window Only) Konica Minolta CS-200(Window Only), CA-210(Window Only), CS-2000 Colormetric Research CR-100, CR-250
Camera Downloadable Preset LUTs	ARRI, Canon, BMD, RED, SONY, Panasonic, GOPRO, FOR-A, JVC, Vision Research. Upto 68 camera types with dynamic range information, sample images are available.
Monitor Color Spaces	Color Space : Rec709, Rec2020, DCI-P3 HDR : ST2084(PQ), HLG1.2(2000nits), HLG1.2(1000nits) Mapping: Rec2020 to Rec709 mapping, HDR to SDR mapping
Still Images	DPX, JPG, BMP, PNG, TIFF, from Clipboard, Capture (IS-100) Picked Pixel Values(before and after), Histogram, Wave Form, Vector Scope
Warning functions	Camera's Dynamic Range Out of Rec709 Gamut Above 400/1000nits for HDR
Environment	Windows7, 8, 10 MacOS 10.9 or later, 1280x720 or larger pixel monitors.

### ■ LICENSES

License	Major functions or restrictions	MSRP( in US Dollers)
Free	One LUTBOX, one camera. LUT cannot be saved on non-volatile memory of LUTBOX. Limited LUT Export Capability	Free
Entry	Two LUTBOX, three cameras. Limited LUT Export Capability	\$100 per year
Standard	Upto 5 LUTBOX.	\$400 per year
Corporate	Upto 20 LUTBOX, usable on 5 PCs. Available in USB dongle option	Please contact your authorized reseller

IMAGE PROCESSING SYSTEM  
**IS-mini**



IS-mini is developed by FUJIFILM and it's LUT processing is extremely high quality and low latency (less than 3μsec) to be usable for live broadcasting. It was supported by not only WonderLookPro but also by LiveGrade, FilmLights's Prelight, QTake HD, Codex Live and others. 4 channel 1U rack mount type which has duplicated power source, named IS-miniRack4K is also available.

**WOWOW**  
ENTERTAINMENT, INC.



This product is made by WOWOW Entertainment, Inc.  
2-1-58, Tatsumi, Koto-ku, Tokyo, Japan 135-8080  
<http://wowowent.co.jp/is/>

Distributor in North and South America is AudioVideo BrandBuilder Corporation.  
1206 APOLLO ROAD, SUITE 852964 RICHARDSON, TX 75081  
+1 (214) 935-9800 / +1 (469) 212-1552  
<https://www.avbbcorp.com/>