

IP BASED REMOTE CONTROL & CONFIGURATION APPLICATION

The ElementManager™ is Teracue's remote control application for encoders, decoders, set top boxes and display devices.

ElementManager™ enables you to effectively administrate individual LAN and intranet products.

It is ONE application that allows you to easily control, monitor and manage almost all Teracue products.

ElementManager™ - One for All

Would you like to turn on all plasma displays and set top boxes in the morning? Quickly control en-coders, decoders and set top boxes and manage them in groups? Monitor the basic health status of installed products?

Real Simple Control

Many video networking installations consist of large numbers of individual hardware devices, which each have their own user interface and own workflow. ElementManager™ enables operators to control and manage these individual devices via one com-prehensive platform.

Flexible Control

ElementManager™ operates based on device sets. Devices, i.e. products can be organized and con-trolled individually, in groups or all at once. Com-mands are stored in presets so they can be easily reused when they are needed again at a later time.

Full Control

Preset-groups are special presets. They are a com-bination of presets, thus enabling the control of two or more completely different device types.

Example Preset-Groups:

"Set encoder bitrates and create new live stream B"

"Turn set top box on and tune to live stream B"

Freedom of Device

Teracue strongly supports the idea of open stand-ards and non-proprietary solutions. Our IPTV sys-tems are designed to operate with most TV's or plasma display models. Therefore the ElementMan-ager™ has been designed to allow easy and quick integration of new and customization for future out-put devices.

Additional Control for Non-IP Products

Non-IP devices can also be remote controlled by the ElementManager™. Serial RS-232/422 com-mands can be tunneled over IP. This is ideal for products that do not have an IP interface or a net-work connection, e.g. plasma displays, LCD's and TV's.

Customized Control

ElementManager™ can also be used with other devices such as lighting control, window shades, facility management, etc. If the 'unknown' devices have an IP or Serial Interface then ElementManag-er™ can be customized to support new products.



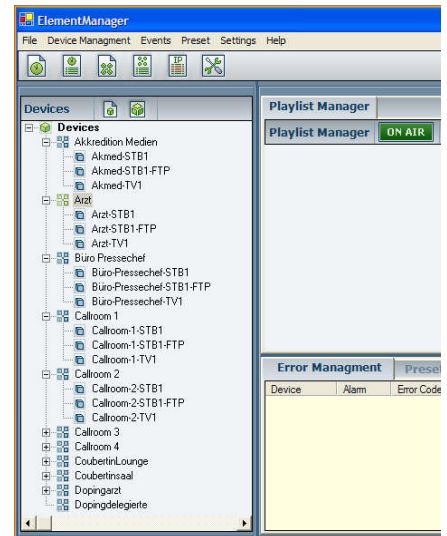
Encoders
ENC Series



Decoder
DEC Series



Set Top Boxes



TV's, Plasmas,
Monitors, Projectors

The ElementManager™ enables you to take control of your IPTV and video networking products. The ElementManager™ has been designed to group and remote control larger number of devices that are present on the network.

Remote control tens or hundreds of set top boxes to receive new or different live streams, turn monitors on/off, and change multiple encoder or decoder settings - all at the same time from one graphical interface.

- ElementManager™ BASIC (EM-BASIC) provides remote control, grouping, presets and basic alarm and scheduling for up to 5 devices/products free of charge
- Additional devices can be licensed via EM-LICENSE-x
- Allows grouping and remote controlling of IP and also serial RS-232/422 devices

ElementManager™ is a Windows® based software application. It enables remote control, remote management and remote monitoring of IP network equipment and networked products. It has been designed as the control application for Teracue products. ElementManager™ enables operators and administrators of IPTV systems to easily and quickly control, group and schedule different products and features within one comprehensive application.

Default support for Teracue products:

ENC-100 encoder / ENC-200 encoder / DEC-200 decoder
*Webconfig with Auto login
 DLL*

Support for third party products:

Amino AmiNET set top box
Changing of Live Stream Source, Website/URL, Reboot

Support for Non-Teracue products:

API and Open.DLL. TV's and plasma displays generally need support for the following:
*Standby, Power On, Set Input, Volume, Mute
 Contrast, Brightness adjustments,
 if some displays are interior and exterior*

Support for Non-IP/Non-Ethernet devices:

RS-232, RS-422, RS-485 devices can be supported if a valid serial product protocol is supplied. IP communication to serial devices is realized by the ENC and DEC series serial pass-through option (for connected TV's, plasmas) or by standalone third party serial/COM servers.

Operating System:

Windows XP, Windows Vista, Windows 7, Windows 2003 Server, Windows 2008 Server

Software Requirements:

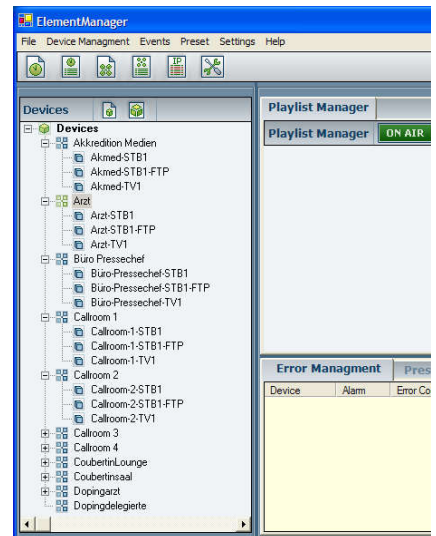
Microsoft .NET Framework 2.0 SP2 (free of charge)

Microsoft MDAC 2.7 or higher (free of charge)

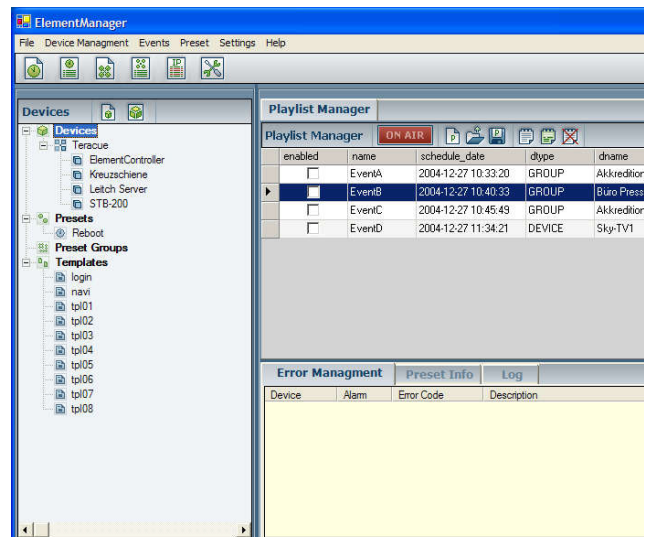
To obtain use Windows Update:

Select "Microsoft .NET Framework 2.0" and install. Reboot. Return to Windows Update and select "Microsoft .NET Framework 2.0 SP2 (service pack2)". (MDAC 2.7 is included). Reboot.

DEVICE - GROUPS



SCHEDULING & PLAYLISTS



ALARMS & MONITORING

