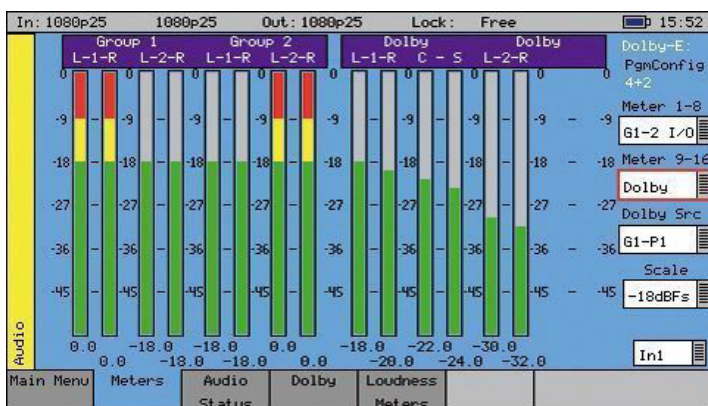


AudioVideo BrandBuilder Corporation



DOLBY D / D+ / E ANALYSIS AND GENERATION

OPTION CODE: PHSXODAG

This option is the combination of two options: **PHSXODA** and **PHSXODG**. Therefore, it allows the display of Dolby D/D+/E meta data present in a selected audio stream and it can also generate Dolby D/D+/E streams from a wide selection allowing engineers to enter and adjust parameters to check broadcast infrastructures.

Just like the Dolby D/D+/E Analysis option, this combined option can determine if the Dolby packet is timed correctly on the SDI video stream. Also, the Dolby D/D+/E may be monitored from any of the SDI input embedded audio channel pairs or the AES input.

During use, the new start menu window displays both the V-Bit information and PCM values along with a snapshot of the Dolby D/D+/E metadata if a Dolby signal is present. Using the *Signal Information* menu, Dolby D/D+/E will present the full analysis display.

The Dolby D/D+/E metadata screen shown on the next page carries primary information including signal source, Dolby 'Guard Band' timing, CRC errors, program channel and metadata detail. The characters shown in white will only be present when a Dolby D/D+/E signal is introduced into the unit. These include:

Config
Frame rate
Bit Depth
Timecode
CNC error count

Program Information
Channel(s) Start and End Gain
Description
Dialog Level
Mix levels

The peak audio levels included in the Dolby D/D+/E meta data packet are displayed on the Audio > Meters page. Select the appropriate set of meters to display Dolby levels which will follow the selected Dolby D/D+/E source.

FEATURES HIGHLIGHTS

- DOLBY D/D+/E ANALYSIS
- 8-CHANNEL VIEW SIMULTANEOUSLY
- DOLBY "GUARD BAND" TIMING
- METADATA VIEW
- CRC ERROR DETECTION
- PROGRAM INFORMATION
- LOGGING
- DOLBY D/D+/E STREAMING SOURCE
- PCM STREAM ON EMBEDDED PAIR
- PCM STREAM ON AES PAIR
- ADJUST START OF FRAME
- SET VIDEO LINE NUMBER
- EDIT PROGRAM INFORMATION
- EDIT METADATA

APPLICATIONS

- R&D DEPARTMENTS
- SYSTEM INTEGRATORS
- SUPPORT ENGINEERS

AVAILABLE FOR

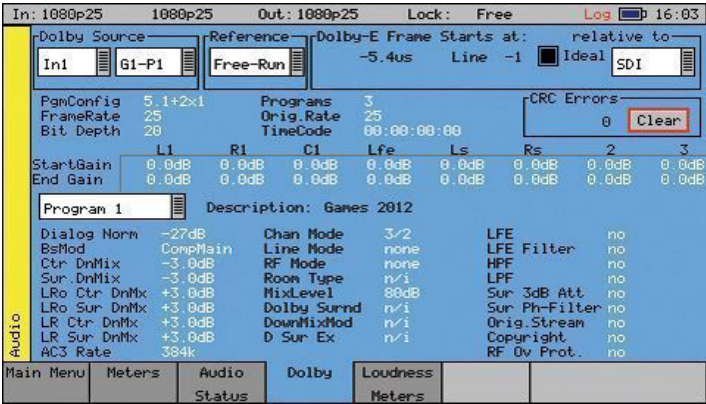
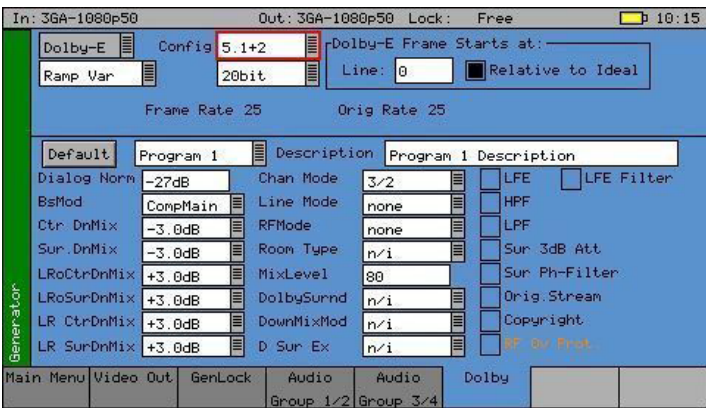
- PHABRIX® TAG (PHSXO-GEN option is required) / TAGC / TAGC-IP
- PHABRIX® SxA
- PHABRIX® SxD
- PHABRIX® SxE

This PHSOXDAG option is unique in being the world's first metadata Dolby generator with editable profiles. With a selection of Dolby D/D+/E streams to choose from, engineers can quickly enter and adjust parameters to check broadcast infrastructure. Dolby streams are provided for all program configurations with fixed audio data. Among the tools included in the Dolby D/D+/E streaming option is the ability to adjust the 'start of frame' for Dolby D/D+/E packets. The generated Dolby D/D+/E follows the video generator reference source.

There is also the ability to edit the program configuration and bit depth with fixed audio signal. The PCM stream can be carried on any embedded or AES pair.

The option can sets the video line number where the internally generated Dolby D/D+/E test stream begins. Meta data can be edited by the user and stored in memories.

* Specifications and features described herein are subject to change without prior notice. Please consult the manufacturer's website for the latest data.
PHABRIX is a registered trademark.



REPRESENTED IN THE AMERICAS BY: