

AudioVideo BrandBuilder Corporation



ADVANCED FORMATS

OPTION CODE: PHSXOF

The Advanced Formats option adds a variety of new formats to the standard set of 76 currently available. These include 4:2:2 YUV, 4:4:4 RGB, and 4:4:4 YUV at 10/12 bit and 3G level A and B. Among the support for 3G level B on the SxA and SxE is the ability to generate and analyze signals such as SMPTE 425-B carrying 1 x 372M dual link payload.

Once the option code has been entered, the new formats will be shown in the generator selection window as exemplified in the picture above.

NOTE:

* This option is not required if the PHSXO-2K option is already installed in the Sx unit.

* Please note that the PHABRIX® SxD has these formats plus additional formats associated with dual link usage.

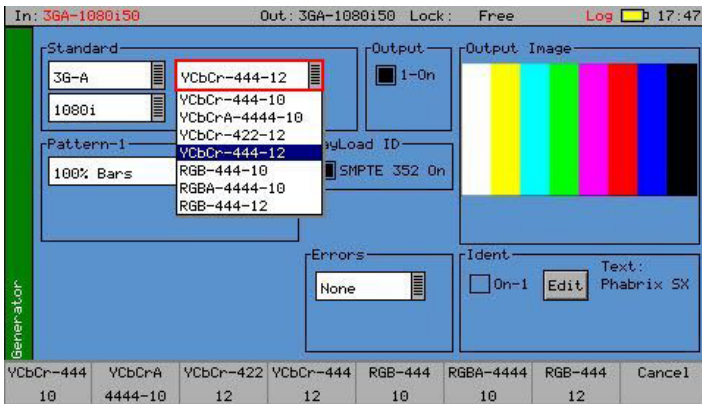
* For the PHABRIX TAG, the PHSXO-GEN option is required.

APPLICATIONS

- R&D DEPARTMENTS
- SYSTEM INTEGRATORS
- SUPPORT ENGINEERS

AVAILABLE FOR

- PHABRIX® TAG/TAGC/TAGC-IP
- PHABRIX® SxA
- PHABRIX® SxE



Link Type	Reference Standard	Resolution		Rates									
				60	59.94	50	30	29.97	25	24	23.98		
1.485 Gb/s				P	P	P							
SMPTE 372M	SMPTE 274M	1920 X 1080	4:2:2 (Y'CbCr _R)/10-bit	P	P	P							
			4:4:4 (R'G'B'), 4:4:4 (R'G'B' + A)/10-bit										
		4:4:4 (R'G'B')/12-bit	I	I	I	P,sF	P,sF	P,sF	P,sF	P,sF			
		4:4:4 (Y'CbCr _R), 4:4:4:4 (Y'CbCr _R + A)/10-bit											
	4:4:4 (Y'CbCr _R)/12-bit												
	SMPTE 428-9	2048 x 1080	4:4:4 (X'Y'Z')/12-bit							P,sF	P,sF		
3 Gb/s				60	59.94	50	30	29.97	25	24	23.98		
SMPTE 425-A	SMPTE 296M	1280 x 720	4:4:4 (R'G'B'), 4:4:4 (R'G'B' + A)/10-bit	P	P	P	P	P	P	P	P		
			4:4:4 (Y'CbCr _R), 4:4:4:4 (Y'CbCr _R + A)/10-bit										
	SMPTE 274M	1920 x 1080	4:4:4 (R'G'B'), 4:4:4 (R'G'B' + A)/10-bit	I	I	I	P,sF	P,sF	P,sF	P,sF	P,sF		
			4:4:4 (Y'CbCr _R), 4:4:4:4 (Y'CbCr _R + A)/10-bit										
	SMPTE 274M	1920 x 1080	4:4:4 (R'G'B')/12-bit	I	I	I	P	P	P	P	P		
SMPTE 428-9	2048 x 1080	4:4:4 (X'Y'Z')/12-bit							P,sF	P,sF			
	SMPTE 274M	1920 x 1080	4:2:2 (Y'CbCr _R)/12-bit	I	I	I	P,sF	P,sF	P,sF	P,sF	P,sF		
3 Gb/s	Mapping of 2 x SMPTE 292M HD SDI Interfaces		BLUE formats are standard on the SxD and as an option on the SxA and SxE TURQUOISE formats on SxA and SxE as SMPTE 425-B carrying 1 x SMPTE 372M dual link payload RED formats can be detected by the Sx but not fully handled										
SMPTE 425-B	1 x SMPTE-372M dual-link payload												

* Specifications and features described herein are subject to change without prior notice. Please consult the manufacturer's website for the latest data. PHABRIX is a registered trademark.

REPRESENTED IN THE AMERICAS BY: